

# God's Family



• 10:00 a.m.—Sunday  
Worship Service

## Inside this Issue:



Sip & Sketch—Much More Than an Art Class— A Message from Nick Bennett	1 & 3
Birthdays; Anniversaries; Services & Special Events; Food Pantry	2
Ash Wednesday Service; The Follow Me Series Continues	3
Member Biography Corner w/photo; Services of Silence & Prayer; Chalkboard	4
Installation of Church Officers; New Melle Chamber of Commerce w/photos	5
Sip & Sketch Night w/photos	6-7
Church Office Renovations w/photos	8-9
Blessing & Commissioning the Church Office and Refreshments w/photos	10-11
New Melle Easter Egg Hunt; Oktoberfest Planning; Theological Pub Men's Meetings	12

**St. Paul's Lutheran Church**  
150 W. Highway D  
New Melle, MO 63365  
(636)828-5616

Volume XXV Issue 2  
February 2024

## *Sip & Sketch—Much More Than an Art Class*

On Thursday, January 25th St. Paul's hosted our first ever Sip & Sketch event in the church hall. Now you might be wondering "What exactly is a 'Sip & Sketch', and why is it taking place at the church?"

When dreaming up this event, the original idea was to host a beginners' art class for members of the community on our church campus. Participants could come and enjoy an adult beverage & visit with folks around them while following along with a step-by-step painting tutorial.

As the room began to fill with people excited to sip, sketch, and socialize, it became apparent that our original vision of a calm and quiet art lesson would need some on-the-spot adaptations. Rather than trying to hush a room full of people enjoying fellowship to attempt an amateur art in-

struction, why not open things up for creative expression? So we did exactly that.

The event commenced with an introduction to St. Paul's, a poem

**It was in the beginning  
Before there was sinning  
When God first created the world.**

**He made eyes, he made ears  
And the stuff to make beer  
And made rabbits and possums and squirrels.**

**He made colors and beauty  
Not cuz it's his duty  
But because it was pretty and nice.**

**But then man made it weird  
And God's painting got smeared  
Costing man an un-payable price.**

**So Christ came and he died  
That in three days he'd rise  
So the debt of our sin would be crushed.**

**And so now it's official  
We all can be bristles  
in Jesus's heavenly brush.**

(included here), and a quick prayer. Participants were then encouraged to let their creativity run wild.

As Christians, we know that we have been created by a creative God. We know that God has a purpose for us, and that he provides us with all of the things we need to survive. Often times, even while counting our many blessings, it is easy to

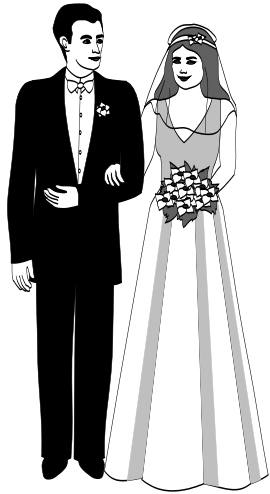
forget the countless unnecessary things that God went out of His way to bless us with. God created beauty, and gave us the capacity to recognize and appreciate it. The heavens and the earth

*(continued on page 3)*



## February Birthdays

- 2/4 – Joyce Schiermeier
- 2/8 – Becky Murphy
- 2/9 – Jackie Eslinger
- 2/9 – Dalton Schmidt
- 2/26 – Janie Fisher
- 2/26 – Sally Goth
- 2/27 – Waylon Chappell
- 2/27 – Amanda Mack



## February Anniversary

- 2/24—Ralph & Carol Ramey—62 years

## February Services

- 2/4—Sunday w/Communion—10:00 a.m.
- 2/14—Ash Wednesday Service—6:00 p.m.
- 2/11—Sunday w/Communion—10:00 a.m.
- 2/18—Sunday w/Communion—10:00 a.m.
- 2/25—Sunday w/Communion—10:00 a.m.

### CONTACT INFORMATION

FOR

Pastor Maxx Fisher

Office: 636-828-5616

or

Cell Phone: 812-216-5891



## January Food Pantry Donations

Members of the congregation reported donating 36 food items and \$65.00 in cash to the New Melle Food Pantry during the month of December.

In the future, if you donate, please report this to Sherry in the office, so your donations can be included in our tally.



## Meal-a-Month Needs for February

The **MEAL-A-MONTH ITEMS** for **February**: Fruit juice, cake icing, chili beans, canned fruit, canned spaghetti sauce, razors, stew. (No glass containers, please.)

Please bring items directly to the Immaculate Heart of Mary Church. If you donating money, please make checks payable to: St. Vincent De Paul Society. You may hand deliver your monetary (cash or check) donation or mail a check to Immaculate Heart of Mary, PO Box 100, New Melle, MO 63365. Please report your donation to Sherry Brandes in the office for Voters Assembly and Ladies Aid records. You only need to report number of items (or boxes or bags) and dollar amount. No names will be attached to the donations; just a monthly tally of the number of food items and dollars donated will be recorded.

---

## **Sip & Sketch** *(continued from pg. 1)*

could have functioned just fine in black and white, but God created a vast array of color. These colors were intricately created for our human eyes to enjoy.

While advertising the Sip & Sketch event to friends, family, and members of the community, many responded with hesitancy due to their lack of artistic experience. I was told things such as “I’m no artist” or “I’m at stick-figure level”. Though I know exploring an unfamiliar hobby in public can be uncomfortable, one can find comfort knowing that it is not always about the finished product. Especially in the case of Sip & Sketch.

This event, on the surface, was about creating paintings. And though everyone left with a finished product in their hands, it was the process that was truly beautiful to see. In the process we created relationships, memories, and future opportunities for fellowship. And at the end of the day, we created a space where people could come do what God made us to do: to love one another while ultimately growing closer to Him.

In Christ,  
Nick Bennett  
St. Paul’s Artist-in-Residence

## **Ash Wednesday Service Will Be February 14th at 6:00 p.m.**

A reminder. We will not be having additional Wednesday night Lenten services due to lack of participation in previous years. However, this is a great opportunity for you to take ownership of your Lenten devotional walk.

- Find a local cause to serve in this Spring
- Gather in a small group for prayer and devotion throughout the Lenten season
- Beginning a spiritual discipline throughout the season of lent
- Give up something that you value or treasure for a period of time and reflect on thankfulness and gratitude to God
- Do the Matthew devotions for our “Follow Me” series as a family, with friends or in a small group
- If you haven’t already, find a new opportunity to serve your church and make a Lenten commitment to start serving. We will need a lot of help with our Sunday Worship Team soon!

Your life as a Christian is not reserved for formal sanctioned church events and gatherings, but rather your whole life! Lent is a great opportunity to contemplate what our life means in the death and resurrection of Jesus!

## **The “Follow Me” Series Continues**

We will cover a chapter of Matthew each week until we finish the entire book (around Easter).

Your worship folders will have many interactive elements you can use at church or at home with your families. There will be devotional materials including suggestions for ways to “live your faith” throughout the week and beyond, fun facts to broaden your knowledge as you study each chapter, and questions to consider about how these readings can touch our own life.

Make the weekly prayer a part of your day-to-day life, as part of our devotional walk together

Linger after service for discussions with Pastor Maxx, as we enjoy our newly commissioned coffee cart!

Try something new, by taking sermon notes, or journaling through your scriptures, with resources for you and your family, which can be found in the narthex.

Do you have kids, grandkids or great grandkids? Begin talking with them through the *Story Bible*, so they can hear God’s story, too!

## Member Biography Corner

### Scott Alexander



#### How long have you been at St. Paul's?

Pam & I have been going to St. Paul's for about a year and a half.

#### What do you do and enjoy doing at St. Paul's?

It's all about the worship we have at St. Paul's. The adherence to the Lutheran faith and teachings of Jesus to follow him and disciple for him.

#### What do you enjoy about being a member of St. Paul's?

Certainly the members and the welcoming feeling of St. Paul's. Along with the heritage and history in the community and the focus we have on changing lives not only in our community, but around the world. I see people and businesses reaching out to us now more than ever before. St. Paul's is becoming a "Go-to leader" in the community for good. We now bring people, non-members onto our campus that have never been here before, because of our mentorship and outreach programs. That's exciting!

#### What is something interesting about yourself? A hobby? Etc.

I have recently retired. So, my focus is to get my golf game in better shape, spend some time with my five grandchildren, and plan more travel around the U.S. and abroad.

**Note about future member biographies:** We plan to highlight one member each month, starting with our leadership and staff. Eventually every member of St. Paul's will be highlighted, so you can start writing your biography now, using the questions from Jackie's biography above!

### Services of Silence and Prayer

#### Monday Mornings

10:00-10:30 a.m.

#### DATES

February 5, 12, 19, 26

Future dates will be available soon.



**Note:** After the commissioning of the church office area, some children couldn't resist the blank chalk board, so they fixed that by drawing a picture and quoting John 3:16. Way to go, Kids! The office is even better now!

—Nick Bennett is rubbing off on the kids! God is truly good!

## Installation of St. Paul's Church Officers for 2024



On Sunday, January 21 the following members of St. Paul's were installed to serve for 2024: Barb Auping, treasurer; Carol Oberaitis, secretary; Scott Alexander, board of property management chairperson; and Jeff Schneider, president.

Rick Pohlmann, pictured to the left is one of the church's two elders. Mark Wehmeier also serves as an elder.

We are blessed to have these dedicated member volunteer to fill such important roles for our congregation.

## New Melle Chamber of Commerce

Some of you might not know that St. Paul's is a member of the New Melle Chamber of Commerce. Not only have I served on the board of the chamber the past two years, but many of our members have also helped make some of the chamber's big community events a great success! Be on the look out for opportunities to join your fellow St. Paulian's in the local Easter Egg Hunt this year!

If you have a business, represent a business, or are simply a resident of the New Melle area and want to serve the community and support local business, you are also welcome to come to the monthly Chamber of Commerce meetings and networking events!

They fall on the first Thursday of the month and begin at 7:30 am.

Check out the website for more details: [newmellechamber.com](http://newmellechamber.com)

While I try to attend when I can, there is nothing wrong with having more representation from our Church!

—Pastor Maxx



We have helped at both their Christmas and Easter events and plan to continue helping this year. Join us, whenever you are available!



# Sip & Sketch



On Thursday, January 25th at 7:00 p.m., St. Paul's hosted its first "Sip & Sketch" in the church hall. Nick Bennett, our Artist in Residence led over 60 people, not just from St. Paul's, but also the New Melle area and beyond, in a fun-filled evening of creativity and relaxation.

They painted, drank free beverages, wore artist's berets, and best of all, talked with each other. They shared a fun experience, had the opportunity to make new acquaintances, and learn a little about the people at St. Paul's and some of the new things St. Paul's has to offer.

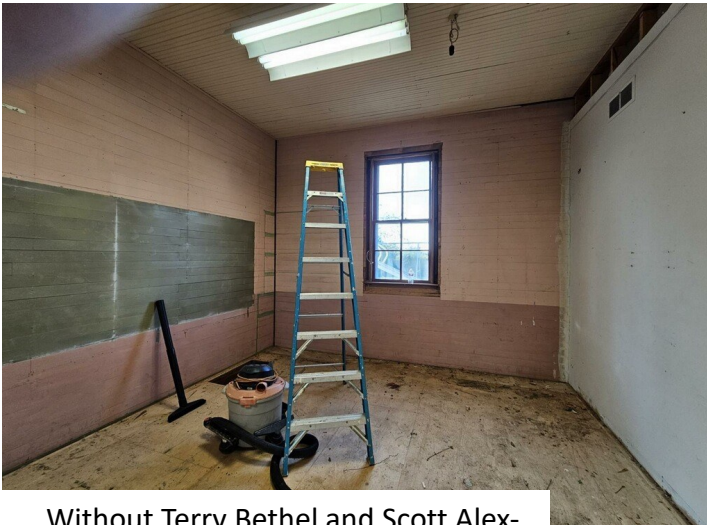
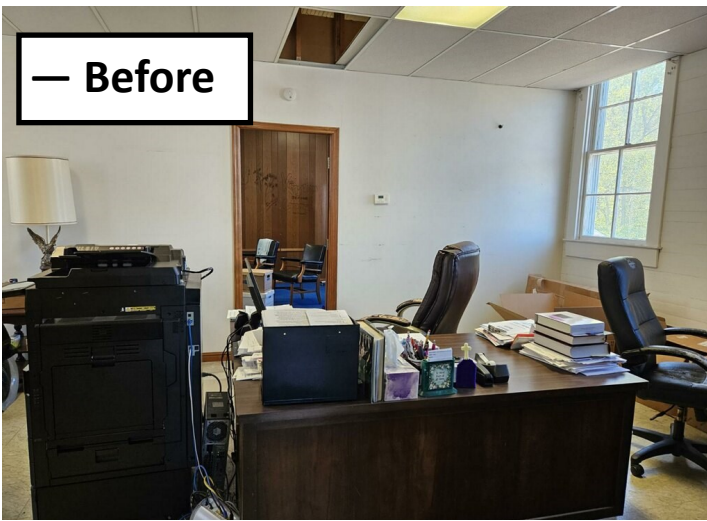




Nick began the evening with a short opening and reading his original poem (on the first page of this newsletter). Then he was all over the room, talking with people, offering help if they wanted it, and encouraging them to just have fun and relax. The packed room amazed him and others from St. Paul's. No one really knew what to expect, but were overjoyed at the result. No one seemed in a hurry to leave and were asking about future events. Way to go, Nick!!!



## St. Paul's Church Office Remodeling Project



Without Terry Bethel and Scott Alexander this project would not have happened. These men devoted and donated untold hours, days, weeks, and months to make it happen. They dedicated themselves to this endeavor and we are indeed blessed to count them as our members and good and faithful servants to our Lord.

They were on ladders and under the building, and they frequently traveled to various stores to get the best products and deals on what was needed. When they couldn't do something themselves, they found people who could.

They continually talked with Pastor Maxx and Sherry to make sure the office and all of its fixtures and equipment worked for them.







...and After



Both offices have retained elements of the history of St. Paul's, while becoming quite modern in appearance and functionality. We thank Pastor Maxx and Janie for their design input and attention to detail throughout the project's development .



The total project came in under budget. We were able to bring back and expose the architectural history of the school house. We upgraded electrical and internet systems for now and into the future. We also uncovered and corrected fire safety issues and health hazards for the church staff. By installing new energy efficient windows ,we are also going to improve our electrical consumption in the office as well. We also repurposed the hall closet ,so it opens now from inside of the office so now Sherry can take advantage of it's space. With the cost savings of the labor to the tune of about \$15,000, we were able to accomplish more of the update of the offices than first thought possible. —Scott Alexander

## Blessing and Commissioning the Church Office



On Sunday, January 21, during the conclusion of the worship service, the congregation walked over to the church office for the official "Blessing and Commissioning of the Office".

Afterwards everyone had a chance to look at all the changes that had taken place.

One beautiful addition was the painting added behind the sofa. Picture on the right above are Scott Alexander, Nick Bennett (our Artist in Residence) who painted the picture behind them. These gentlemen all deserve our gratitude.

Picture to the right are Janie Fisher and Mary Bethel. Mary was responsible for the refreshments available in the hall after the service and commissioning.

Those who had not witnessed the transformation of the office space repeatedly said how amazing and beautiful it was.

What a great day for St. Paul's . Thank you again, Scott , Terry, Janie, Pastor Maxx and everyone else who participated in this arduous project.





## Food & Fellowship to Celebrate a Job Well Done

On the list of projects is the continuing clean up of the hall, small classroom, and basement.

But for this day, it was a time of fellowship and joy. People are beginning to recognize that there are many things to do and that members of St. Paul's are finding ways to get them done.

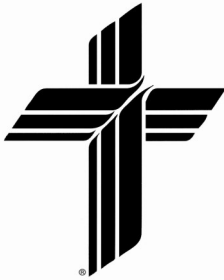
One of those endeavors will be deciding what is important to keep and what must go. Below, Barb Auping and Mark Wehmeier are looking at just some of those items.



St. Paul's Lutheran Church

P.O. Box 70  
New Melle, MO 63365

"A new command I give  
you: Love one another."  
John 13:34



St. Paul's Lutheran Church-  
Missouri Synod

## St. Paul's, Let's **SHINE** for the Kids in Our Community

If you want to  
learn more about  
what **YOU** can do  
to help with the  
New Melle Easter  
Egg Hunt...  
call  
Annie Schneider  
at **636-795-8360**  
or email her at  
[aschneider52@gmail.com](mailto:aschneider52@gmail.com)

**Volunteers Needed**  
for  
**New Melle's**  
**29th Annual**  
**Easter**  
**Egg Hunt**  
**volunteer opportunities**  
available on  
**March 28th, 29th, & 30th**  
Contact Annie Schneider to learn  
more about how to get involved  
& help represent St. Paul's!

### IT'S NEVER TOO EARLY TO THINK ABOUT OKTOBERFEST

#### St. Paul's 2024 KICKOFF MEETING:

Tuesday, February 20 at 6:00 p.m. Everyone is welcome! Bring your ideas to continually improve our festival.



## THEOLOGICAL PUB

MEN, BEER & GOD

DIFFERENT BREWS. DIFFERENT VIEWS.  
ALL PERSPECTIVES WELCOME

The pub is the original public house, a place to talk about life, philosophy and faith. This is exactly the kind of space men need to explore questions of faith.

Inspired by the Inklings of Oxford, like C.S. Lewis and J.R.R. Tolkien, we'll explore an interesting topic or something new someone is working on.

The format is simple: beer, conversation, and God. Sign up and bring your questions, your curiosity, and your thirst for more. First timers get a free beer.

[church](#)

The first meeting is  
Thursday, February 15  
6:00-8:00 p.m.

Meetings will be the third Thursday of the month at  
Good News Brewery in Defiance from 6:00-8:00 p.m.

6:00-6:30 p.m.—Happy Hour

6:30-8:00 p.m.—Study and Fellowship (topics will vary  
month to month)