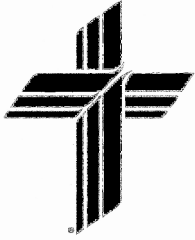


# God's Family



• 10:00 a.m.—Sunday  
Worship Service

## Inside this Issue:



Growing the Celebration—A Message from Pastor Fisher	1 & 3
Birthdays, Anniversaries, Services of Silence & Prayer; Worship Services & Food Pantry	2
Mentor 1 Worship Series & Small Groups	3
Member Biography Corner: Marilyn Finke w/photo; Voters Meeting Minutes	4
Artist in Residence (AiR) w/photo	5
Building Up to Oktoberfest w/photos	6-7
LERT w/photos	8-9
New Member Reception w/photos	10
Ladies Aid Guest Speaker w/photos	11
FireStarters Fall Schedule w/photo	12

**St. Paul's Lutheran Church**  
150 W. Highway D  
New Melle, MO 63365  
(636)828-5616

Volume XXIV Issue 9  
September 2023

## Growing the Celebration

Did you know we have had about 35 people join our church in the past 3 years? This doesn't include folks who have come back or renewed their dedication to walking with the Church. These are folks who were gathered by the Spirit and chose to join us on Jesus' mission.

35... I think I knew that was the ballpark, but to see the number added up on my excel sheet struck me. 35. 35 people that stretch the spectrum of their faith walk.

For perspective, this is 30% or more of our church membership!

Some are engaging their faith after years of seeking. Some are transferring to be make a bigger impact in their local community and the mission field. Some have moved and are eager to be a part of this church that exudes joy and hospitality. The list goes on.

35. I just can't stop saying. 35! St. Paul's Lutheran Church... this is a joy, and I am so happy to share it with you. What's more... there are still more as we speak, prayerfully considering if they too will make their spiritual home with us!

So, what does this have to do with Oktoberfest? Did you know some of our newest family members' first time on campus was, in fact, Oktoberfest.

Brothers and sisters of St. Paul's... we are in the Church business to raise up disciples and to harvest those Christians God has raised up in the mission field. THAT is what Oktoberfest is about.

Soon we will have 600+ fellow human beings on our campus. Some will be from area Lutheran Churches, some will be our Catholic, Baptist, and UCC neighbors, some will claim Christianity, but have not been to church, some will deny Christianity, but be appreciative of the teachings, some will despise Christians, but like Jesus, some will have a loose grasp on who Jesus is at all.

ALL will be sinners, ALL will have brokenness in their past and present, ALL will benefit from a church that welcomes them, loves them, serves them, and witnesses the JOY of knowing Christ.

Sure, making some money is important. We want the festival to continue to grow in scale and scope for the sake of all that has been mentioned above. BUT we can't forget the greatest element and the strongest piece to the Oktoberfest machine. That's YOU.



(continued on page 3)



## September Birthdays

9/3 – Judy Joerling

9/4 – Leonard Sudbrock

9/4 – Marian Wildschuetz

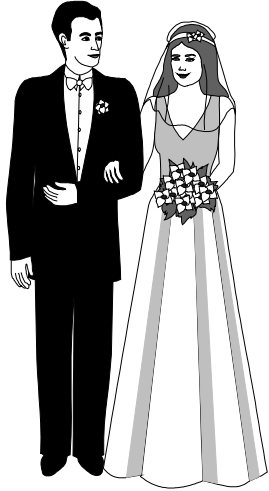
9/13 – Jeff Schneider

9/14 – Diana Eschenbrenner

9/16 – Ethan Eslinger

9/16 – Wanda Greiwe

9/24 – Shelley Running



## September Anniversaries

9/1 – David & Amoret Chappell – 10 yrs.

9/26 – Terry & Mary Bethel – 54 yrs.

9/27 – Mike & Sandy Schmidt – 29 yrs.

9/28 – James & Teresa Holladay – 38 yrs.

## September Services

*Communion at all services:*

9/3—Sunday Service—10:00 a.m.

9/10—Sunday Service—10:00 a.m.

9/17—Sunday Service—10:00 a.m.

9/24—Sunday Service—10:00 a.m.



## August Food Pantry

Members of the congregation reported donating 36 food items and \$115.00 in cash to the New Melle Food Pantry during the month of August.

In the future, if you donate, please report this to Sherry in the office, so your donations can be included in our tally.

## Meal-a-Month Needs for September

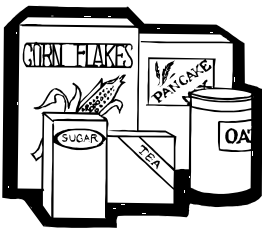
**MEAL-A-MONTH ITEMS for September:** Mayonnaise, ketchup, BBQ sauce, applesauce, canned pears, spaghetti sauce, tuna helper, fruit juice, regular coffee, pancake syrup, pancake mix, laundry detergent, and paper towels.

Please take your items directly to the Immaculate Heart of Mary Church in New Melle during their office hours. Call 636-398-5270 in advance to be sure there is someone present to accept your donation. Monetary donations should be made payable to "St. Vincent De Paul Society" ("Food Pantry" on the memo line). Monetary donations may be

hand-delivered to the church or be mailed to: Immaculate Heart of Mary Church, PO Box 100, New Melle, MO 63365.

Please report your donation to Sherry Brandes in the office for Voters Assembly and Ladies Aid records. You only need to report number of items (or boxes or bags) and dollar amount. No names will be attached to the donations; just a monthly tally of the number of food items and dollars donated will be recorded.

**NOTE:** Food Pantry hours are: The 1<sup>st</sup> and 3<sup>rd</sup> Saturdays of each month from 9:00 to 10:30 a.m. Please tell anyone who might benefit from this service!



---

## Growing the Celebration *(cont'd from page 1)*

Events, programs, even historic buildings are all nice, useful, and maybe really helpful, but the strongest tool we have for evangelism is you.

Your witness, your relationship building, your hospitality, your joy overflowing, your eagerness for the Word, your desire to worship, your gratitude.

And, of course, your love and sacrificial service to the community.

If you are one of those 30+ I mentioned. Thank you, because you all made the commitment and participated in this growth, and I know through many conversations, you are excited to participate in more people coming to join us on this walk of faith, to follow Jesus!

And that is why I address you all, the 30 new brothers and sisters, those who have grown up here, not as new or old, as past or future, but as St. Paul's... Jesus is still up to something at St. Paul's. This Oktoberfest let's join him, and see who else we can touch, bless, and reach with the gospel! Let's see who else we can love!

And hey, why not enjoy it, too? Who says you can't serve with a famous St. Paul's sausage in hand?

In the Joy of Christ,  
Pastor Maxx

## MENTOR 1

### Worship Series

Mentor 1 is a worship series that will deepen our discipleship on how we mentor others.

The series will walk with the biblical witness of how we can better mentor our neighbors, in a way that is inviting and winsome.

We will learn how to focus on service and love for the person, as well as the responsibility to live a life that follows Christ and his teachings.

ALL of the congregation is invited to choose one person they would like to focus on, pray for, and intentionally walk with in loving service in their life. The goal is not necessarily to get them to join our church, but rather to begin the practice of being a follower of Christ and loving our neighbors as Christ has taught us!

This person can be a young Christian, a young-in-the-faith Christian, a non-practicing Christian, or a non-Christian altogether!

**The series begins September 10<sup>th</sup> and runs through October 8<sup>th</sup>.**



### Small Group Opportunity

We are inviting and encouraging all members to join a small group or become a digital pen pal for a 5-week, once-a-week commitment.

*Small groups will be encouraged to:*

Meet together once a week at a location the group chooses.

(feel free to make it enjoyable!)

Choose devotion or scripture reading each session.

Share about your journey in mentoring 1 person, sharing joys and struggles with the group.

Keeping confidentiality within the group. Respect people's vulnerabilities and trustworthiness.

Pray for each other's needs.

Enjoy each other's company!

## Member Biography Corner

**Marilyn Finke**

**How long have you been at St. Paul's?**

I have been at St. Paul's since about 2005.



**What do you do and enjoy doing at St. Paul's?**

I am the church secretary/greeter/money counter. I have especially enjoyed singing in the church choir over all these years and wish I could do it more often.

**What do you enjoy about being a member at St. Paul's?**

I enjoy the friendships I have made and the opportunities to grow in my faith.

**What is something interesting about yourself? A hobby? Etc.**

I have been blessed to have an interesting and rewarding career for the past 42 years as a veterinarian. My parents gave me a horse in 9th grade after several years of begging. This led to my veterinary career and a lifetime of horseback riding.

**Note about future member biographies:** We plan to highlight one member each month, starting with our leadership. Then we will move on to our office staff, and eventually every member of St. Paul's, so you can start writing your biography now, using the questions from Marilyn's biography above!

### **ST. PAUL'S LUTHERAN CHURCH VOTERS MEETING MINUTES July 9, 2023**

**CALL TO ORDER** – President Rick Pohlmann called the meeting to order. 13 members were present.

**OPENING DEVOTION** – led by Pastor Fisher.

**MINUTES** – Accepted as presented.

**RATIFICATION OF TRANSFER** (into and out of congregation) – Jacob Gould and four sons, Alexander, Nicholas, Joshua, and Oliver, from Messiah Lutheran Church, Weldon Springs, MO.

**REPORT OF PASTOR** – Gave information regarding pledge cards; Fire Starters will be held again in the fall; upgrading audio vision equipment; and the Artist in Residence program.

**REPORT OF TREASURER** – Accepted as presented.

**BOARD OF ELDERS** – The back pew has been removed. That area to be designated for handicap use. There will be a campus clean-up day on 7/15/23.

**BOARD OF PROPERTY MANAGEMENT** – Fire department annual review. The church door lock has been repaired. Checking on cost of stump removal.

**UNFINISHED BUSINESS** – Repair bathroom in the Parsonage.

**NEW BUSINESS** - None

**ADJOURNMENT**

**CLOSING PRAYER**

Respectfully submitted by  
Marilyn Finke

---

## Artist in Residence (AiR) - Nick Bennett

**Note from Pastor Maxx:** St. Paul's, we have been awarded a \$50,000 grant to host an Artist in Residence along with various projects this year. I would like to introduce to you the young man who will be helping us reach New Melle with the gospel!



**Our First Note from Nick:** Hi, guys! My name is Nick Bennett! I am so excited to meet you all and to serve along side of you at St. Paul's! I grew up in O'Fallon, Missouri with my Dad, Mom, and three younger siblings. Growing up, my favorite hobbies included fishing, hunting, camping, and anything outdoors. When I wasn't marveling at God's creation, I found myself trying to create something on my own.

I always loved the arts, so much that I even went to school for it. In 2021 I graduated from the University of Arkansas with a Bachelor of Fine Arts, with an emphasis in drawing. Though drawing was a focus, I enjoy all things creative! Shortly after graduating, I found myself clueless as to what I wanted to do for work. Although I didn't know what to do, I had no doubt in my mind about where I wanted to do it. I am blessed with an amazing family that leaves no doubt in my mind about where to call home. Since moving home in January of 2023, I have spent my time as tree-trimmer by day, a bartender by night, and hanging out with my little brother as much as possible.

I have been praying each day that God would point me in the right direction, and that He will equip me to use my creative gifts to do something cool for the kingdom. And although I'm not entirely sure what that looks like yet, I have no doubt that the Lord will use this opportunity in ways that not even the most creative mind could imagine. I am so excited to meet you all, and I cannot express how thankful I am for the welcome!

## Building Up to Oktoberfest—October 15, 2023!

Our Oktoberfest is a continually evolving parallel to our mission to embrace our community with the love and grace bestowed upon us by our Savior. This year will be another example of the power God shows through us.



We will have our historical favorites like the sausage dinner and country market along with children's games and features, welcome center, heritage display, live music and entertainment, our Good News Brewing partners, and a stein hold contest (Masskrugstemmen).



As always we will need plenty of hands on deck to bring this mission to our community. Whether you can spend all day serving our mission or a portion of the afternoon, we hope everyone can make themselves available to offer their contribution to the Lord's work of bringing our community together...and on the campus that was so instrumental in founding and building our beautiful home of New Melle, Missouri.

Maintaining our commitment to youth and adults alike, we are **COMBINING** the free Kid's Carnival (Kinderfest) from years past with our Oktoberfest to bring people of all ages one huge, joyful, entertaining, and belly-filling experience!



**THERE IS STILL TIME TO  
BECOME AN OKTOBERFEST SPONSOR**

**You can also support Oktoberfest with  
your monetary contributions**

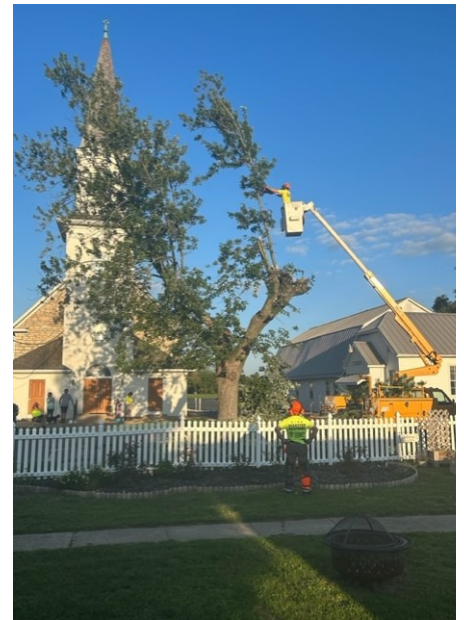
**Check out the flyer about Sponsorship  
Packages in this newsletter**

Now, we need **YOU** to **SPREAD THE NEWS** about Oktoberfest. Invite people, use your Social Media sites, get on other websites, take the flyer in this newsletter and share it with neighbors and/or businesses in your area...or take 10 (available in the church narthex or office). Do **WHATEVER YOU CAN** to make this Oktoberfest a **HUGE SUCCESS!**



Your offerings of service can be directed to Jeff Schneider, who will help you find just the right opportunity to join one of the many teams building our event for success. Basic categories are: food preparation and serving, sausage frying, guest welcome, games, making pretzel necklaces, country market, setup, cleanup, and any other unique talents you have. You may call him (636-448-1050) or email him (jschneider59@gmail.com) or speak to him at church. You can also leave a message with Sherry in the church office to have him contact you!

## LERT (Lutheran Early Response Team) Serves St. Paul's



### Notes from Jeff Schneider:

These are generic accounts of the sequence of events that led to the removal of the tree. They are accurate enough for explanation, but not an exact timeline.

A few years ago, Frisella's Nursery was enlisted to provide advice and guidance on landscaping options for our campus. Among the recommendations was the large maple adjacent to the parsonage was sick and in need of removal. Earlier this year members of the board of directors, board of elders, Pastor Maxx, and concerned members of St Paul's closely examined the tree's condition. It was determined the existing condition and frequent falling branches dictated removal sooner than later. After finding LERT would remove the tree at no cost, the decision was made to remove the tree as soon as LERT could schedule the work.

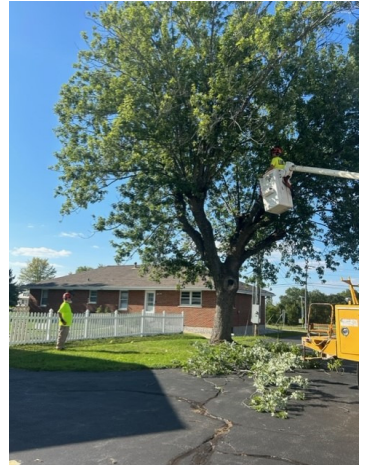
This work began on Wednesday, August 30 and concluded on Thursday, August 31. During removal of the tree the evidence supporting removal became painfully obvious. Most of the large upper branches and portions of the trunk were hollow with very little structural integrity left. The LERT team members, aided greatly by Larry Zuhone, were able to remove the tree and debris quickly. Many of the hollow sections of the tree have been retained to repurpose as planters and other craft projects.

ALSO...LARRY ZUHONE deserves big KUDOS for his work to get our phone and internet back the next morning...he left at about 11:00 after they finished with the tree...HE IS AMAZING!

*One last bit:* The nest of baby squirrels in one of the hollow main branches was saved and inhabitants rehomed.







**Notes from Pastor Maxx:**

Special thanks to the LERT team for helping us, yet again, prepare for our future landscaping projects by removing our tree.

Be sure to be at Oktoberfest October 15<sup>th</sup>, for a chance to take home a cross carved from the trunk of this tree God gifted us for all these years!

Interested in Joining LERT? Reach out to the office for more information!



# New Member Reception



During the church service on Sunday, August 13, St. Paul's received and welcomed three new members to our congregation: Randy Pohlmann, Kristin Pohlmann, and Kyle Pohlmann.

Following the service members joined in fellowship in the church hall to informally meet and greet these new members.



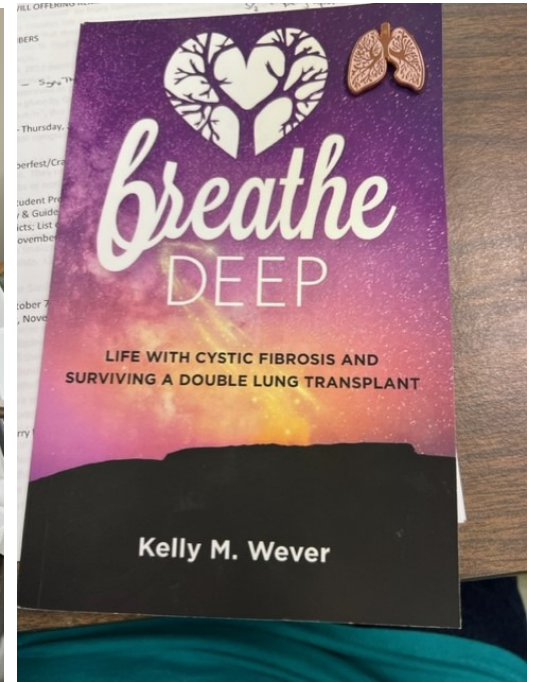
Light refreshments were prepared and provided by Terry and Mary Bethel (pictured on the left).

## Ladies Aid Members Welcome Special Guest Speaker Kelly Wever

Prior to the Ladies Aid meeting on Thursday, August 3, members were amazed to learn about the survival and awesome recovery of Kelly Wever.

Kelly was initially diagnosed with cystic fibrosis. Her health eventually deteriorated to near death, while she waited and prayed for a double-lung transplant.

She told of her growing faith and trust in God, and continual support of her family and friends.



She told her story of suffering and near death, as the Ladies Aid members listened in amazement to the trials that brought her nearer to God and her eventual recovery.

Kelly is married, had a child during her severe illness, has recovered from the transplant process, has written a book, and now works to help others with cystic fibrosis.

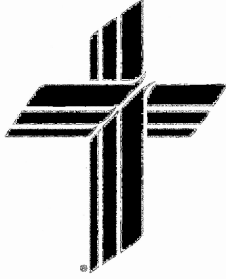
She told those present that her survival was only possible because of the Lord. Her faith and her family carried her through tough times, we can only imagine.



St. Paul's Lutheran Church

P.O. Box 70  
New Melle, MO 63365

"A new command I give  
you: Love one another."  
John 13:34



St. Paul's Lutheran Church-  
Missouri Synod



## Fall Schedule

**Fire Starters** is St. Paul's Out-reach class. This class is where we bring in new members, answer questions for the curious, or just offer those outside our community a chance to get to know us.

**Fire Starters** is also our In-reach class. It is a chance for the disciples of St. Paul's to be reignited for the mission and go back to the basics, but also to learn more about their own story and ask important questions, as well as exercise their evangelism muscles by bringing and walking with their friends and family.

We sincerely ask and hope that all of you will participate in these classes as members, even if you do not have someone to bring. We all need the word, discipleship, and to be set on fire!



**October 22<sup>nd</sup>**

**Fire Starter's - Ignition Class kickoff**

**11:30 a.m.—1:00 p.m.**

**Come see what St. Paul's is all about and learn more about our story of faith, and how the story goes on!**

**Lunch provided**

**Childcare will be available**

**Materials and resources provided for guests and visitors for free**

**Kindle the fire with our follow-up classes before Worship**

**8:45-9:45 a.m.**

**November 5<sup>th</sup>, November 12<sup>th</sup> & November 19<sup>th</sup>**

If you can't make all the classes that's ok! We will offer the class multiple times a year, so you can get it all. Though it is always great to do them all at once, we want you to know your relationship with St. Paul's is more than just a class, but an ongoing process of discipleship as we walk together.

**Note:** Fire Starters is our "New Members" class in that its completion is required for membership next steps. If you are desiring membership and cannot make all the classes, we will work with you to complete the classes and be bought into membership in a way that works for everyone.

If you do not desire to be a member, but are sincerely looking to learn about our faith, AWESOME! We will not sneakily "make you a member" or sign up for things you don't want. We are just grateful to have you join us!

Questions? Call Pastor Maxx: 636-828-5616 (church office) or at 812-216-5891 (cell)